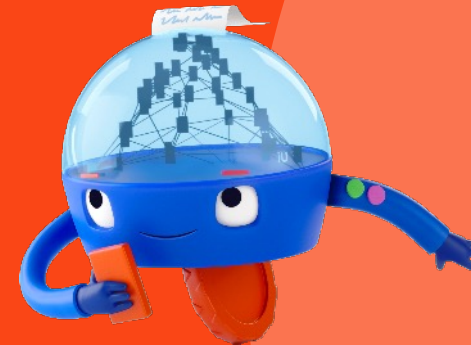
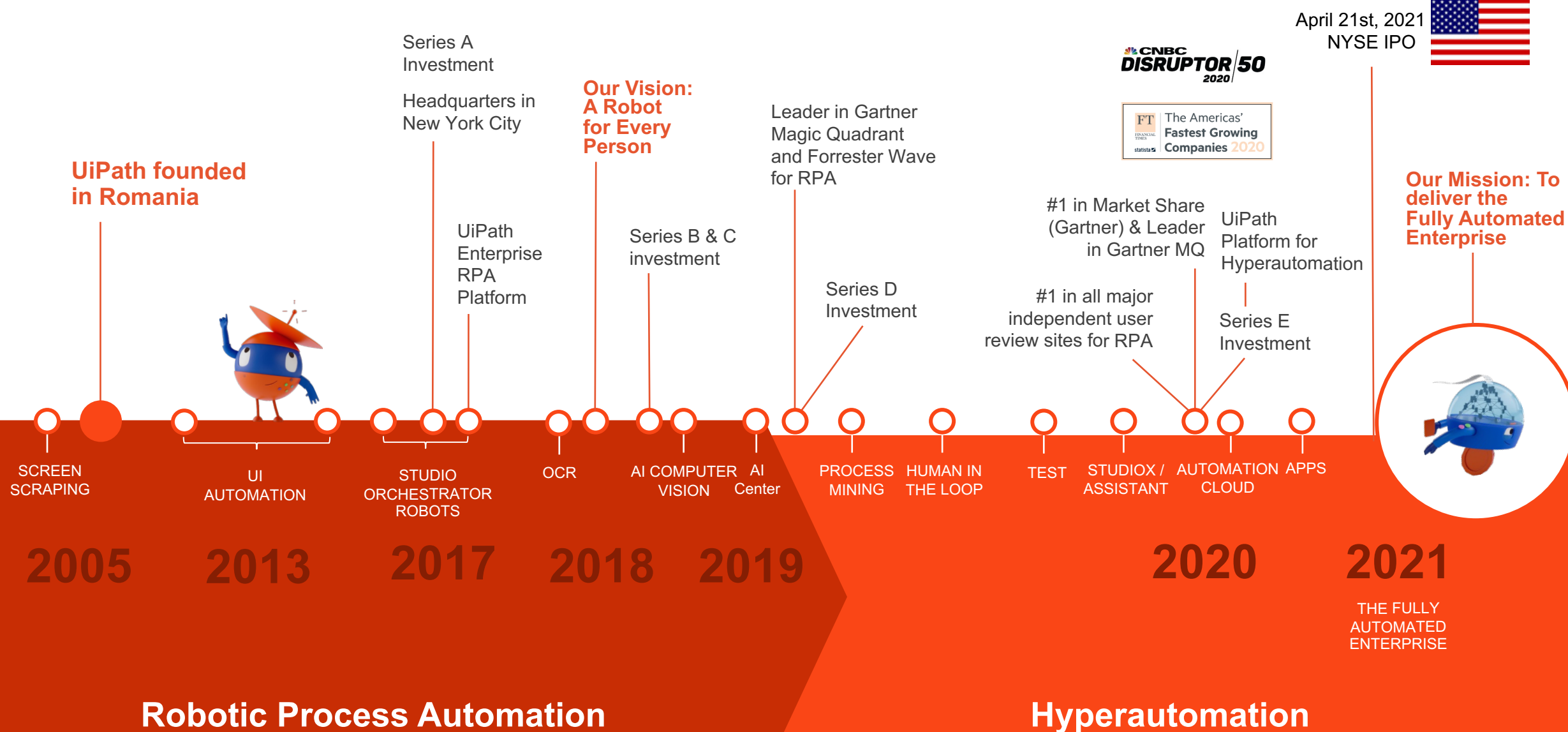


UiPath CIONET Event Italy

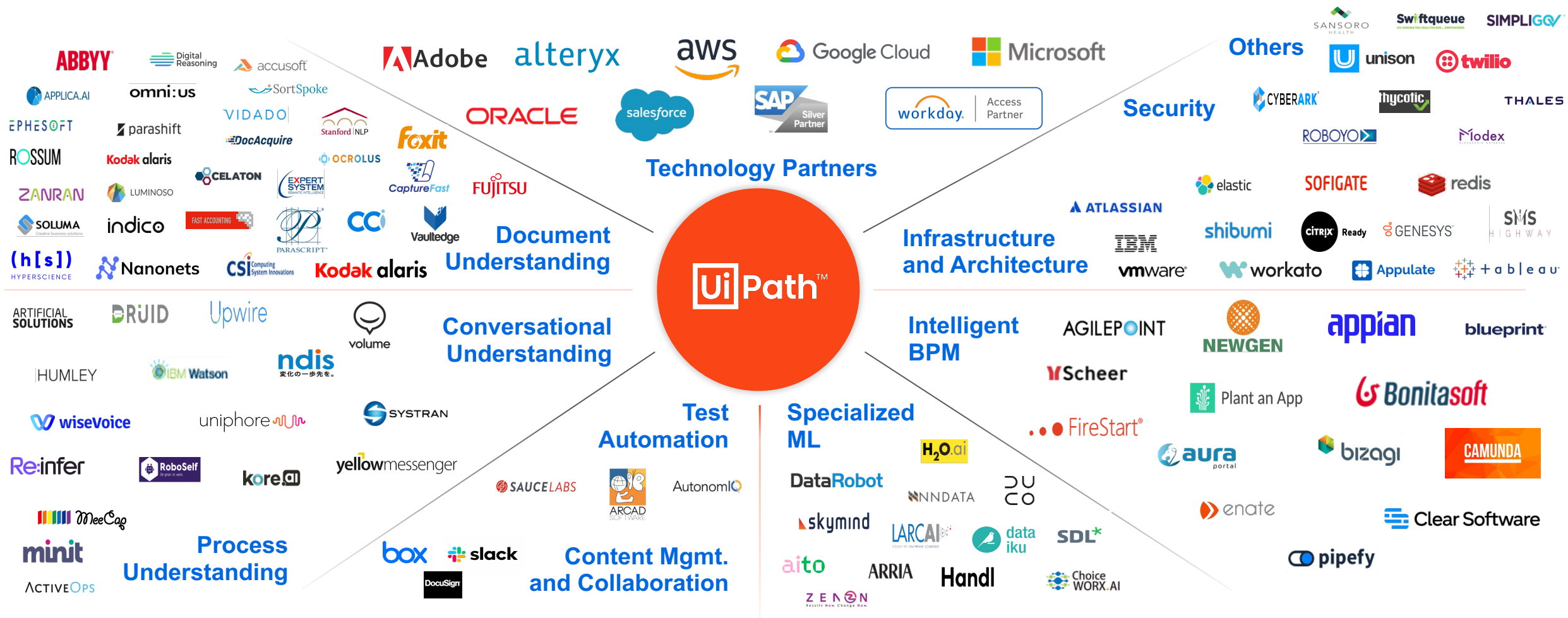
Milan, May 12th 2022



Our history of innovating and building the automation industry



Open platform supported by a robust ecosystem



Secure, certified integrations you can trust

UiPath Marketplace

Further, the linkage burden makes it harder to quickly build workflows and digital solutions to meet **critical challenges**

Workforce Gaps

The Great Resignation:
62% of organizations
struggling to **find workers**

Source: UiPath: 3rd Annual Survey of U.S. Business Executives, 2021

Customer Satisfaction

58% of consumers have
**higher expectations for
customer experiences**
than before the pandemic

Source: 2021 ACA Consumer Study

Innovation

90% of executives say
COVID will **fundamentally
transform their business**
in next 5 years.

Only 21% say they're
equipped to change

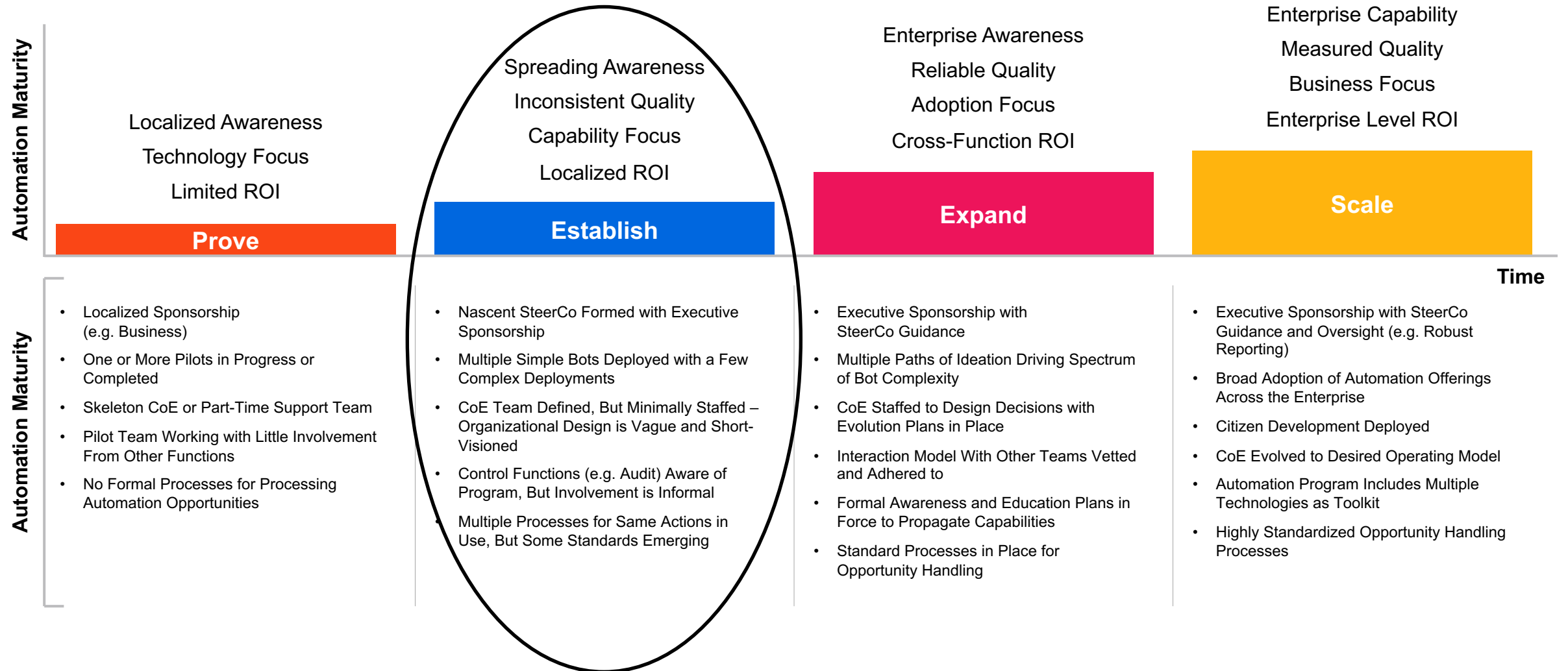
Source: McKinsey Innovation Through CrisisSurvey, 2020

Digital Transformation

Organizations with higher
"digital maturity" have
growth and net profit
margins that are **3X**
higher than those with
lower maturity

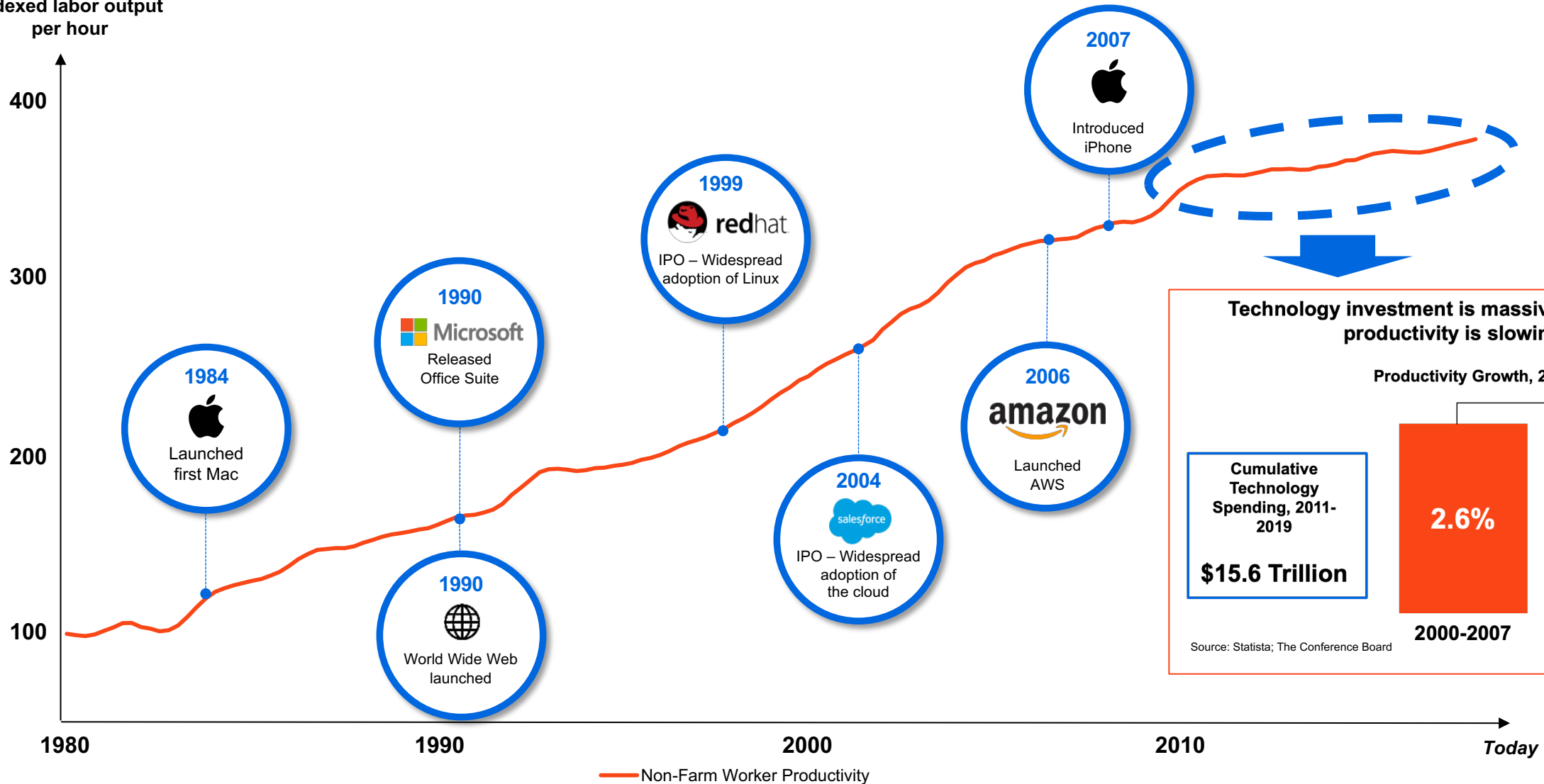
Source: Deloitte Digital Transformation Survey 2020

As automation programs mature, their progress (or lack thereof) is marked expected profile elements



Tech innovation once drove higher productivity... but recently **productivity has flatlined...why?**

Indexed labor output
per hour



Technology investment is massive—but global productivity is slowing

Productivity Growth, 2000-07 vs. 2011-2019

Cumulative
Technology
Spending, 2011-
2019
\$15.6 Trillion

2.6%

2000-2007

1.7%

2011-2019

-35%

Source: Statista; The Conference Board

Companies that encourage humans to work with robots see massive gains

30-40% improvement in operational efficiency¹

30% reduction in cost¹

Additional Benefits²



Improved speed of response delivering shorter time to value



Resilience as employees can make better decisions



Reduced repetitive tasks enabling to shift employees to strategic work



Compliance and reduced errors



Increased throughput without hiring more headcount

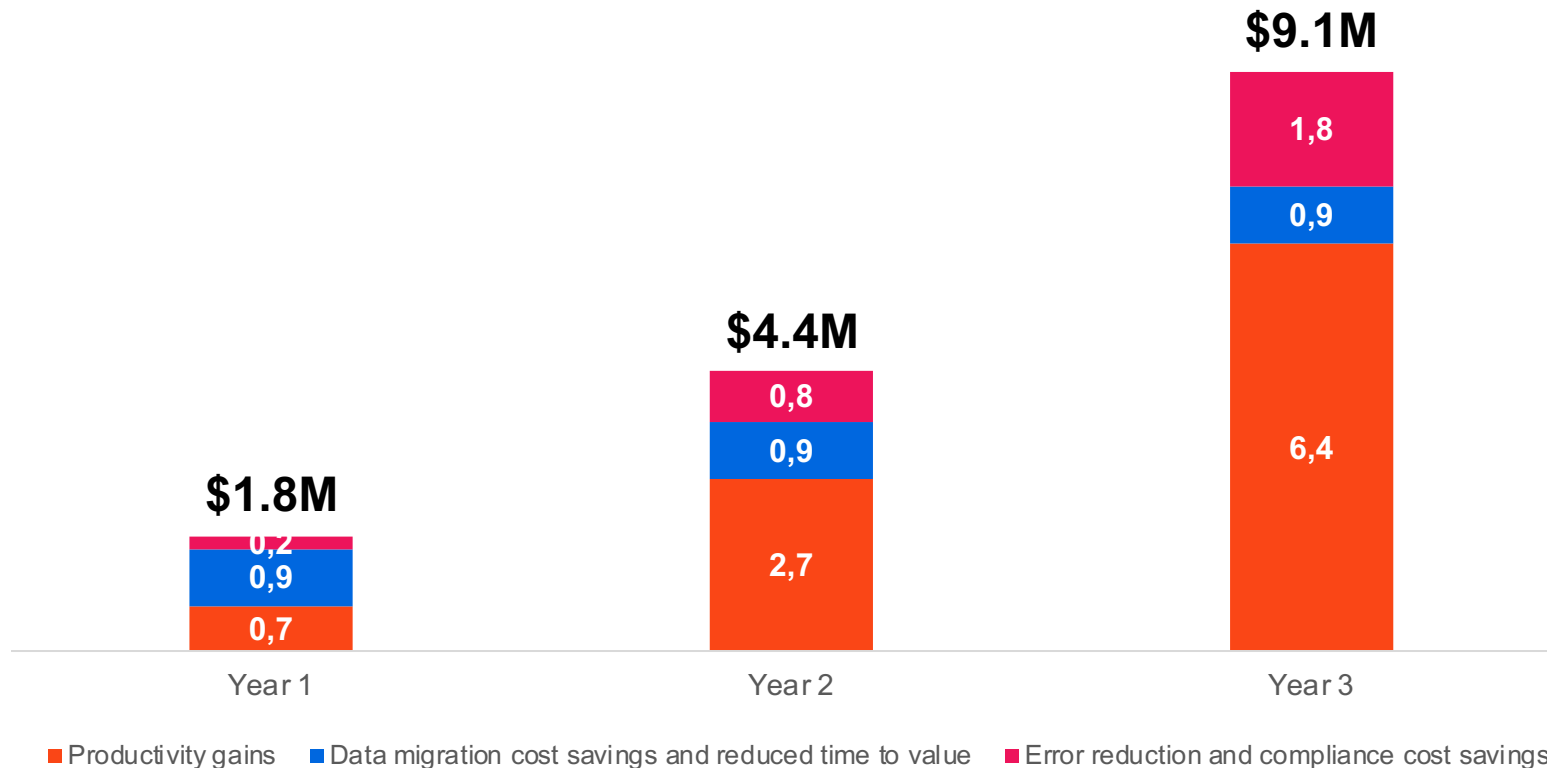


Improved customer satisfaction

1. [Everest Group, Smart RPA Playbook](#)
2. [IDC, A Robot for Every Worker: Are We Ready for a People-First Automation Mindset](#)

UiPath helps organizations shed the linkage burden... releasing massive value across the enterprise

Total Economic Impact of UiPath Automation \$ Millions



\$15.3M

3-year risk-adjusted return

97%

return on investment

NOTE:

Does not include additional value from revenue gains due to new businesses/ higher customer satisfaction

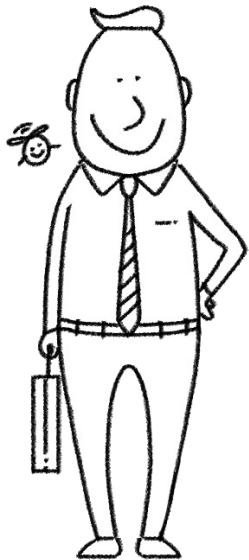
Source: The Total Economic Impact™ of the UiPath Platform, Forrester, 2021

Calculations based on a "composite organization": global enterprise headquartered in North America with ~10,000 employees and \$8 billion in revenue. Risk adjustment: -10%.

By working with robots, employees save time – unlocking capacity at scale

Estimated time savings by providing a robot assistant to **one employee**

240 hours per year



1 hour per day
20 hours per month

Estimated time savings by providing a robot assistant to **15k employees**

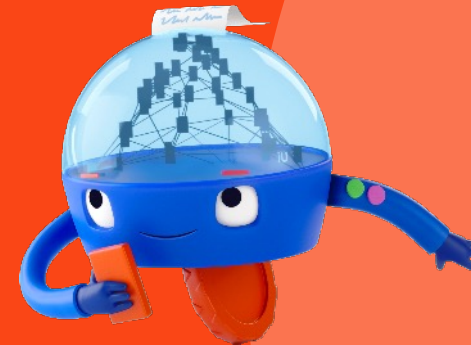
3.6M+ hours per year



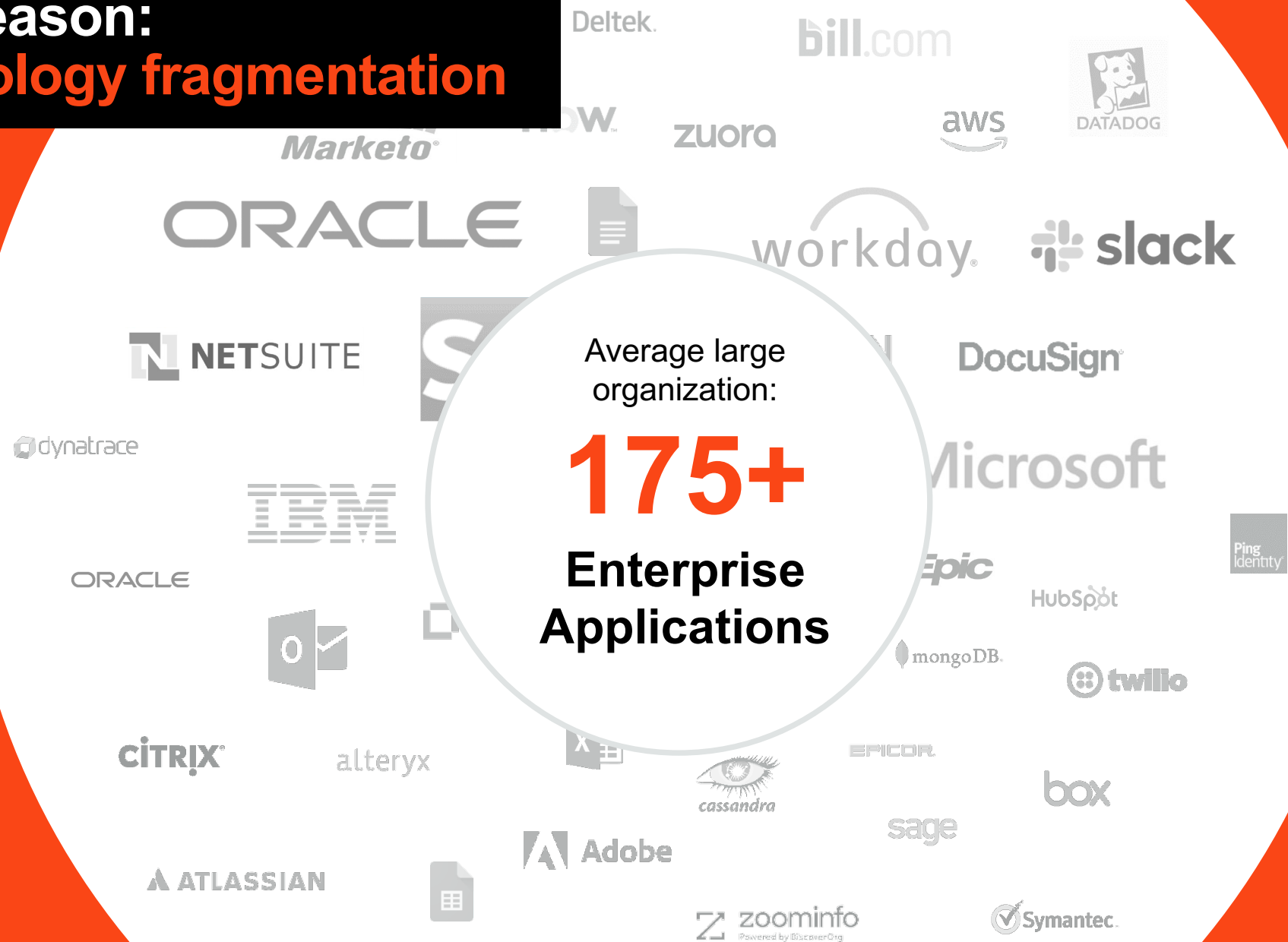
UiPath CIONET Event Italy

Backup slides

Milan, May 12th 2022



One reason: technology fragmentation



UiPath Platform for the fully automated enterprise



CoE Leads



Process Analysts



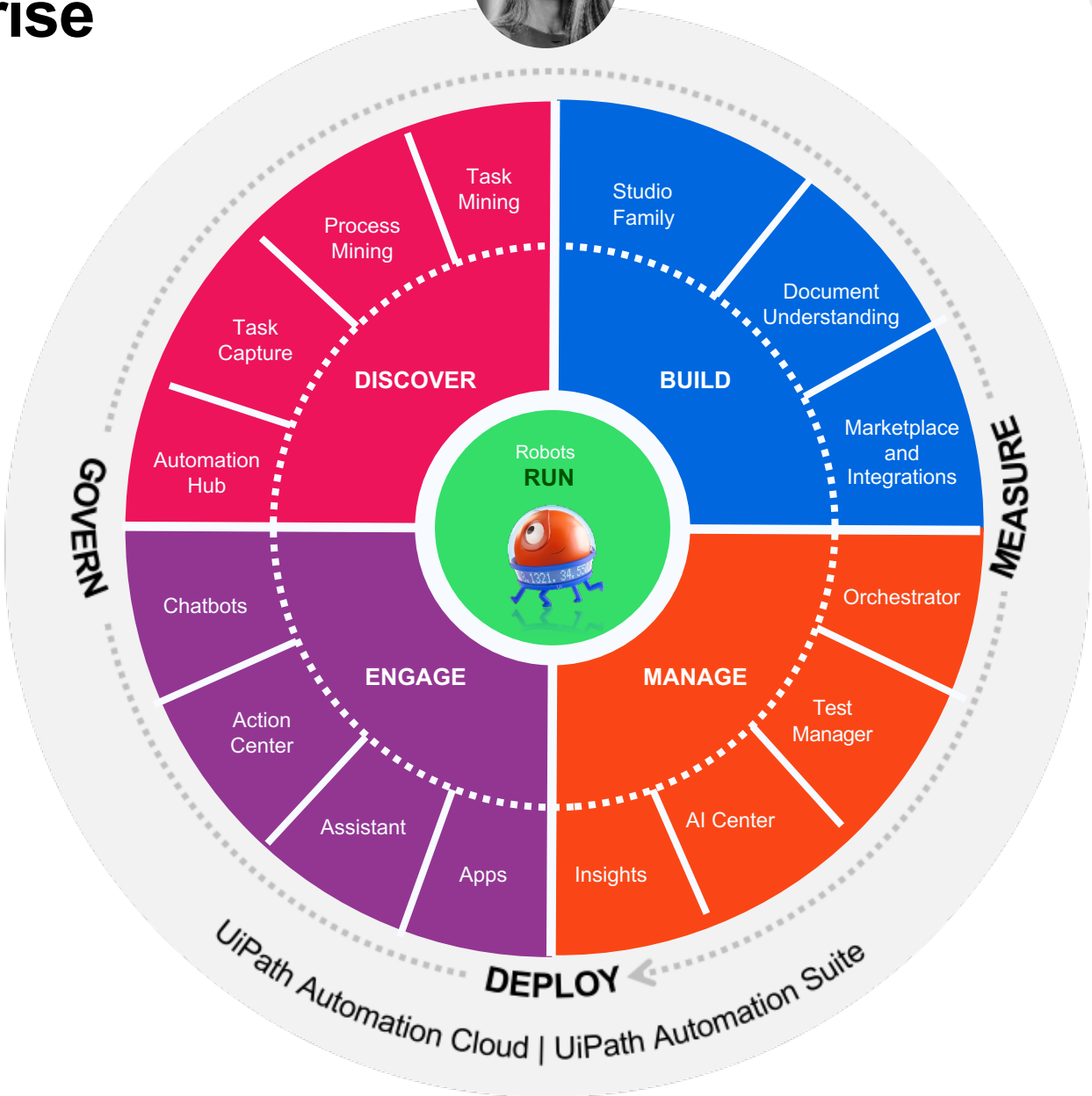
Automation Users



RPA & Citizen Developers



IT Operations



The UiPath Platform enables the **fully automated enterprise**



Assign automatable work to robots

Robots do the mundane and repeatable work



Provide a robot for every person in the company

Robot assistants augment and empower human workers



Democratize development

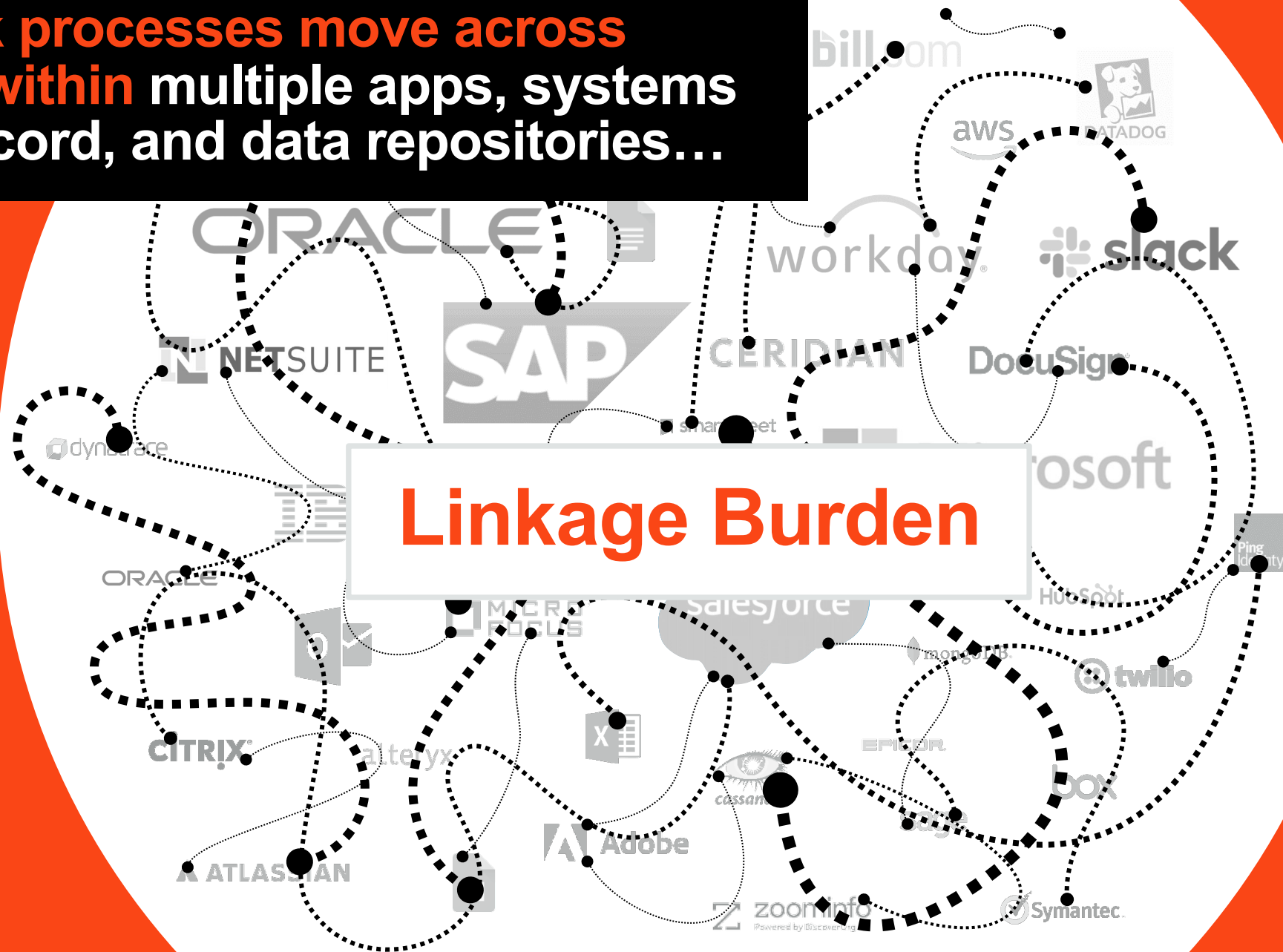
Workers can automate simple tasks with low-code apps



Unleash AI across every facet of work

Deploy AI to build smarter robots and spot every automation opportunity

**Work processes move across
and within multiple apps, systems
of record, and data repositories...**



People carry much of this burden:
frustrating for them, **inefficient** for
the enterprise

Opening apps
& systems

Inputting data

Transferring
data

Copy & pasting

Lookups

Compiling

Analyzing and
reconciling

Routing &
alerting

Combining data
sources



In the fully automated enterprise, everyone has a robot assistant



Assign automatable
work to robots



Provide a robot
for every person
in the company

Robot assistants augment and
empower human workers



Democratize
development



Unleash AI across
every facet of work

On average, employees spend 6+ work-weeks a year on repetitive, automatable tasks.

Bain & Company, 2021 "Overcoming the Automation Paradox"

In the fully automated enterprise, anyone who wants to can automate simple tasks



Assign automatable
work to robots



Provide a robot
for every person
in the company



**Democratize
development**

Workers can automate simple
tasks with low-code apps



Unleash AI across
every facet of work

30% of US workers want to learn automation skills

UiPath survey of 4,500 global workers

In the fully automated enterprise, automation expands AI; AI expands automation



Assign automatable
work to robots



Provide a robot
for every person
in the company



Democratize
development



**Unleash AI
across every
facet of work**

Deploy AI to build smarter
robots and spot every
automation opportunity

**60% of enterprises need more than a month to get a model into production.
20% say that 9 out of 10 of their models remain unused.**